

Intermediate flange KFS / MFS



APPLICATION

For adaption of cartridge mandrel KFR/MFR/KFR-SE/MFR-SE or KFS/MFS - on spindle head ISO 702-1 / ISO 702-3 (DIN 55021/55022/55026 and 55027).

TYPE

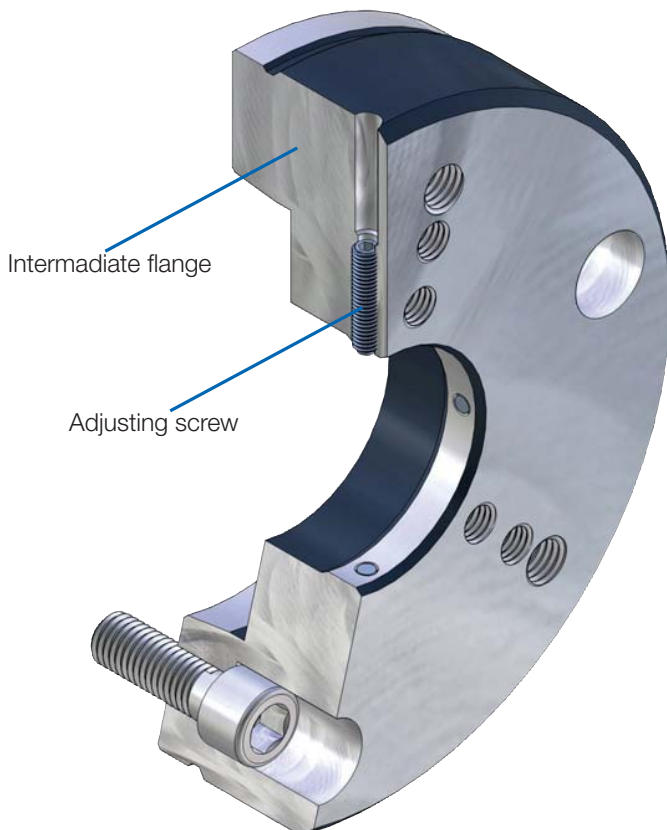
For KFR/MFR/KFR-SE/MFR-SE or KFS/MFS.

CUSTOMER BENEFITS

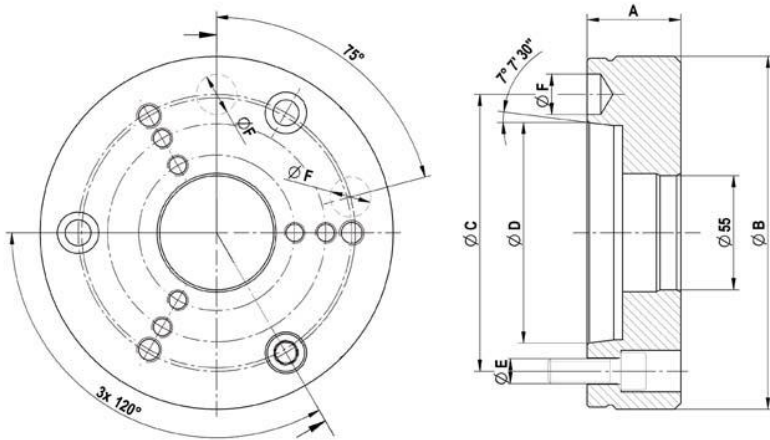
- ☺ By replacement of the intermediate flange, one cartridge mandrel can be used on different machines

TECHNICAL FEATURES

Adaptation of KFR/MFR/KFR-SE/MFR-SE cartridge mandrel or KFS/MFS on spindle head, with or without adjusting screw, with or without performing air sensing. Version acc. to ISO 702-1 (DIN 55028-A) or ISO 702-3 (DIN 55028-C), in size no. 5, no. 6, no. 8, no. 11 or no. 5, no. 6, no. 8 (A5, A6, A8, A11 or C5, C6, C8).

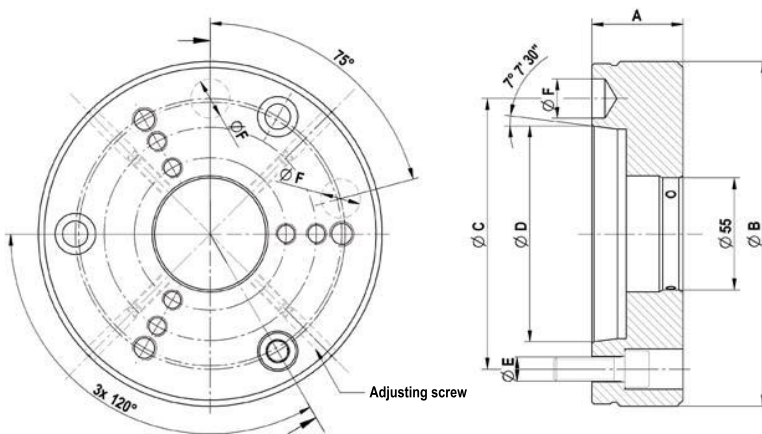


Accessories KFS / MFS



C 18
Intermediate flange ISO 702-1 (DIN 55026/55021) without adjusting screws

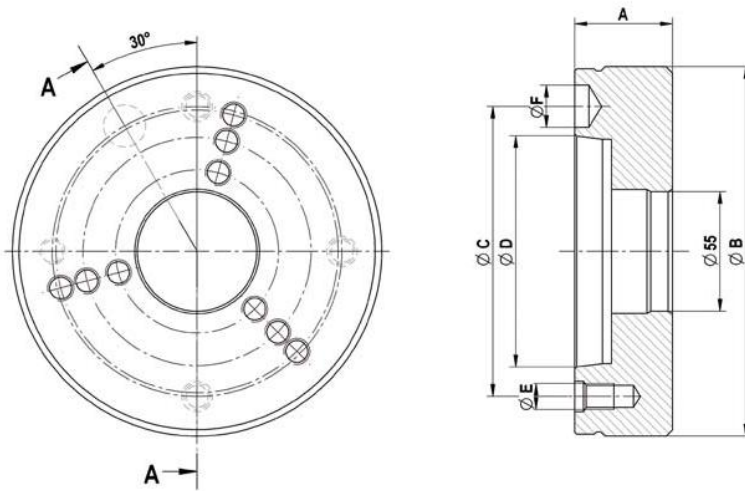
	Nr. 5 (A 05)	Nr. 6 (A 06)	Nr. 8 (A 08)	Nr. 11 (A 11)
Intermediate flange	893975	893976	893977	893978 ▲
Design	without air-sensing	without air-sensing	without air-sensing	without air-sensing
Mount-Ø 55	+0,003/+0,001	+0,003/+0,001	+0,003/+0,001	+0,003/+0,001
A mm	45	45	50	50
Ø B	165	170	220	282
Ø C mm	104,8	133,4	171,4	235
Ø D mm	82,563	106,375	139,719	196,869
Ø E	M10	M12	M16	M20
Ø F mm	16,3	19,45	24,2	29,4



C 18
Intermediate flange ISO 702-1 (DIN 55028) with adjusting screw

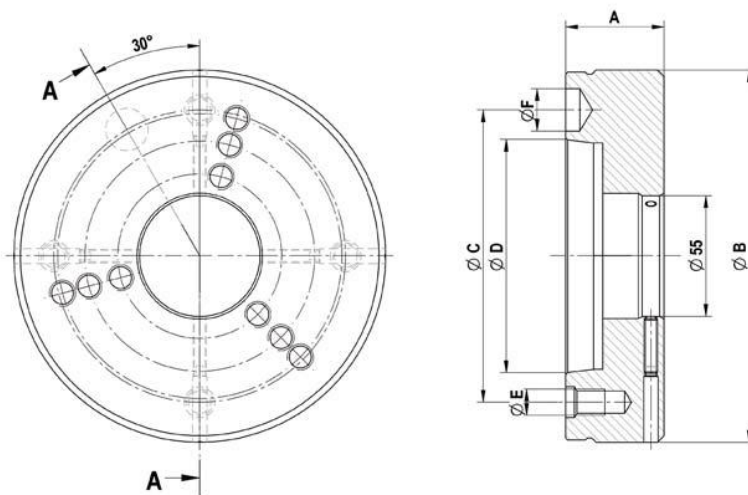
	Nr. 5 (A 05)	Nr. 6 (A 06)	Nr. 8 (A 08)
Intermediate flange	893979	893980	893981
Design	without air-sensing	without air-sensing	without air-sensing
Mount-Ø 55	+0,05/+0,04	+0,05/+0,04	+0,05/+0,04
A mm	45	45	50
Ø B	165	170	220
Ø C mm	104,8	133,4	171,4
Ø D mm	82,563	106,375	139,719
Ø E	M10	M12	M16
Ø F mm	16,3	19,45	24,2

Accessories KFS / MFS



C 18
Intermediate flange ISO 702-3 (DIN 55027/55022) without adjusting screws

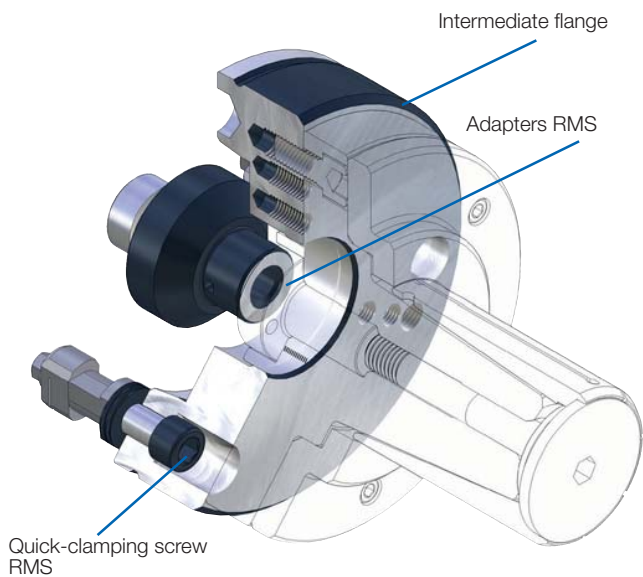
	Nr. 5 (C 05)	Nr. 6 (C 06)	Nr. 8 (C 08)
Intermediate flange	893982	893983	893984
Design	without air-sensing	without air-sensing	without air-sensing
Mount-Ø 55	+0,003/+0,001	+0,003/+0,001	+0,003/+0,001
A mm	45	45	50
Ø B	165	170	220
Ø C mm	104,8	133,4	171,4
Ø D mm	82,563	106,375	139,719
Ø E	M 10	M 12	M 16
Ø F mm	16,3	19,45	24,2



C 18
Intermediate flange ISO 702-3 (DIN 55027/55022) with adjusting screws

	Nr. 5 (C 05)	Nr. 6 (C 06)	Nr. 8 (C 08)
Intermediate flange	893985	893986	893987
Design	without air-sensing	without air-sensing	without air-sensing
Mount-Ø 55	+0,05/+0,04	+0,05/+0,04	+0,05/+0,04
A mm	45	45	50
Ø B	165	170	220
Ø C mm	104,8	133,4	171,4
Ø D mm	82,563	106,375	139,719
Ø E	M 10	M 12	M 16
Ø F mm	16,3	19,45	24,2

Accessories KFS / MFS



APPLICATION

For manual clamping devices exchange in a minimum of time.

TYPE

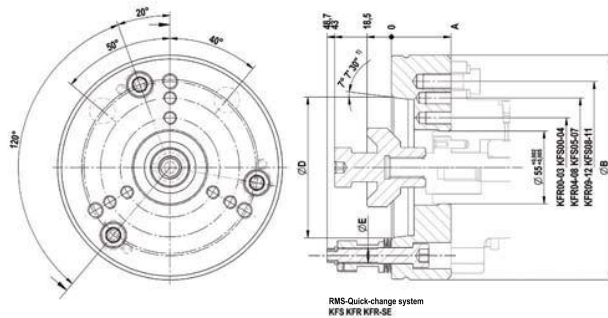
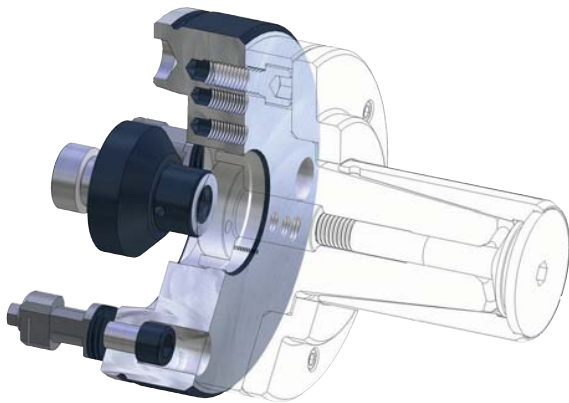
Manual quick-change system for clamping devices. Fits KFR/MFR or KFS/MFS. Central lubrication and / or air sensing control possible.

CUSTOMER BENEFITS

- ⊕ Manual clamping devices change in about 30 seconds
- ⊕ High change precision within 0.005 mm
- ⊕ Quick change of different clamping devices with short time, similar to the automatic or semiautomatic clamping devices changing systems

TECHNICAL FEATURES

- Quick-change system suitable due to recording RMS see quick-change system RMS (Product Group 6)
- Corresponds to the guidelines of the Employer's Liability Insurance Association in combination with ROHM safety clamping cylinder OVS and LVS



C18

RMS quick-change system, hand-operated for clamping devices

	KK 06	KK 08
RMS - complete (flange incl, quick-clamping screw)	1160026 ▲	1160027 ▲
Adapters RMS	1183310 ▲	1183311 ▲
A	45	50
Ø B	170	220
Ø C	133,4	171,4
Ø D	106,375	139,719
Ø E mm	M12	M16
Ø F mm	55 (+0,003/+0,001)	55 (+0,003/+0,001)